



IMPROPER INSTALLATION OR ATTACHMENT OF EQUIPMENT OR ACCESSORIES COULD RESULT IN ELECTRIC SHOCK, SHORT-CIRCUIT, LEAKS, FIRE OR OTHER DAMAGE TO THE EQUIPMENT. BE SURE ONLY TO USE ACCESSORIES MADE BY DAIKIN WHICH ARE SPECIFICALLY DESIGNED FOR USE WITH THE EQUIPMENT AND HAVE THEM INSTALLED BY A PROFESSIONAL. IF UNSURE OF INSTALLATION PROCEDURES OR USE, ALWAYS CONTACT YOUR DAIKIN DEALER FOR ADVICE AND INFORMATION.

## THIS KIT INCLUDES THE FOLLOWING PARTS

| model                        | liquid branch | discharge gas branch | suction gas branch | heat insulation material | reducer/expander pipe        |
|------------------------------|---------------|----------------------|--------------------|--------------------------|------------------------------|
|                              |               |                      |                    |                          |                              |
| KHRQM22M20T8                 | o             | —                    | o                  | 2 sets                   | 4 pipes                      |
| KHRQM22M29T8                 | o             | —                    | o                  | 2 sets                   | 5 pipes                      |
| KHRQM22M64T8                 | o             | —                    | o                  | 2 sets                   | 6 pipes                      |
| KHRQM22M75T8                 | o             | —                    | o                  | 2 sets                   | 7 pipes                      |
| KHRQM23M20TA<br>KHRQM23M20T8 | o             | o                    | o                  | 3 sets                   | TA: 3 pipes<br>T8: 2 pipes   |
| KHRQM23M29TA<br>KHRQM23M29T8 | o             | o                    | o                  | 3 sets                   | 5 pipes                      |
| KHRQM23M64TA<br>KHRQM23M64T8 | o             | o                    | o                  | 3 sets                   | 8 pipes                      |
| KHRQM23M75TA<br>KHRQM23M75T8 | o             | o                    | o                  | 3 sets                   | TA: 17 pipes<br>T8: 13 pipes |

## DIMENSIONS OF THE PIPING

### Branch dimensions

|              | liquid branch | discharge gas branch | suction gas branch |
|--------------|---------------|----------------------|--------------------|
| KHRQM22M20T8 |               | —                    |                    |
| KHRQM22M29T8 |               | —                    |                    |
| KHRQM22M64T8 |               | —                    |                    |
| KHRQM22M75T8 |               | —                    |                    |

|                              | liquid branch | discharge gas branch | suction gas branch |
|------------------------------|---------------|----------------------|--------------------|
| KHRQM23M20TA<br>KHRQM23M20T8 |               |                      |                    |
| KHRQM23M29TA<br>KHRQM23M29T8 |               |                      |                    |
| KHRQM23M64TA<br>KHRQM23M64T8 |               |                      |                    |
| KHRQM23M75TA<br>KHRQM23M75T8 |               |                      |                    |

## Reducer/expander pipe dimensions

|        |        |        |        |
|--------|--------|--------|--------|
| 1<br>  | 2<br>  | 3<br>  | 4<br>  |
| 5<br>  | 6<br>  | 7<br>  | 8<br>  |
| 9<br>  | 10<br> | 11<br> | 12<br> |
| 13<br> | 14<br> | 15<br> |        |
| 16<br> |        |        |        |

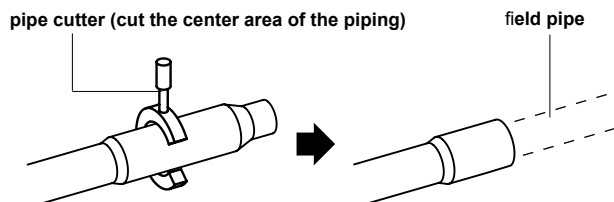
## INSTALLATION PROCEDURE



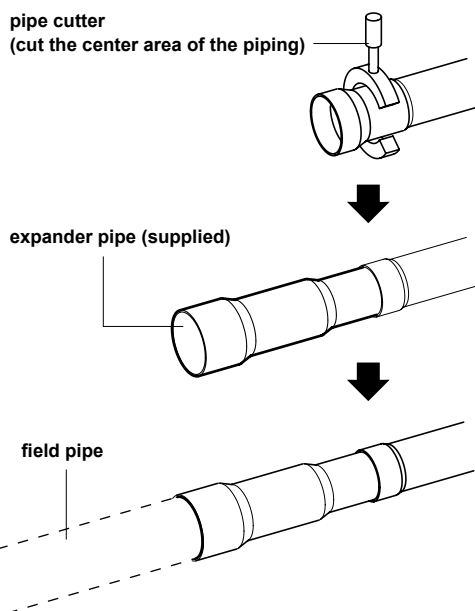
### INSTALLATION PRECAUTIONS

Make sure to flow nitrogen gas through the pipe when brazing.

Use a pipe cutter to cut off the pipe at a position where the size of the pipe fits the size of the connecting pipe selected according to the pipe selection procedure.



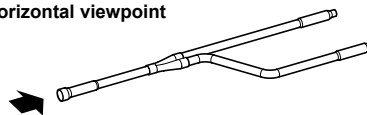
Use the supplied reducer/expander pipes when necessary



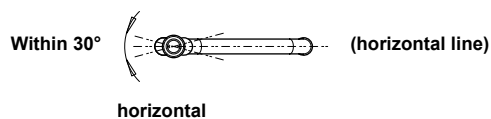
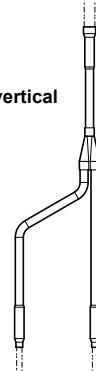
## Installation orientation

Install the branches so that they are oriented vertically or horizontally.

horizontal viewpoint



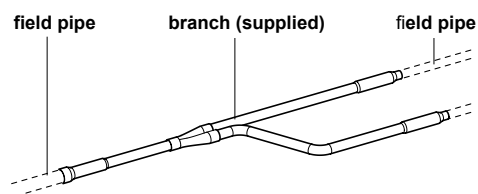
or vertical



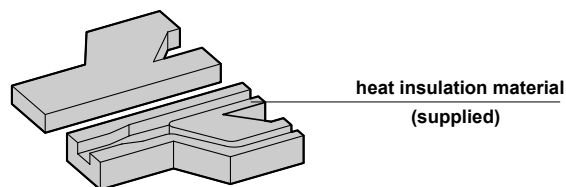
## Heat insulation

Be sure to insulate the branches against heat.

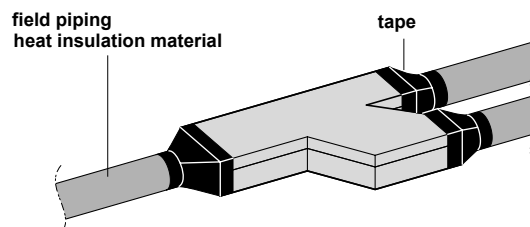
■ Example of connected branch.

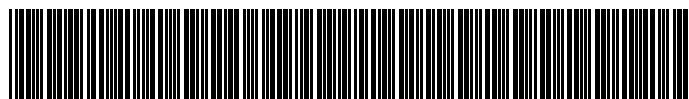


■ Use the supplied heat insulation material to insulate the branches against heat.



■ Apply the heat insulation material and seal all connections with tape.





\*4PW36003-1 B 0000000F\*