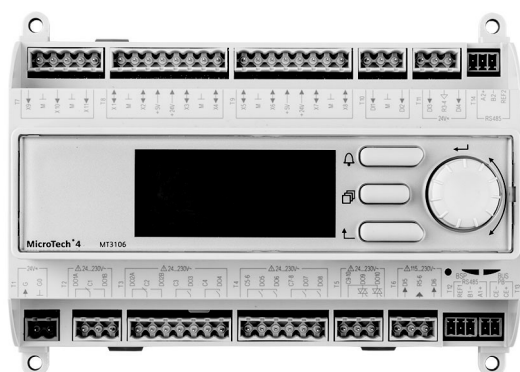
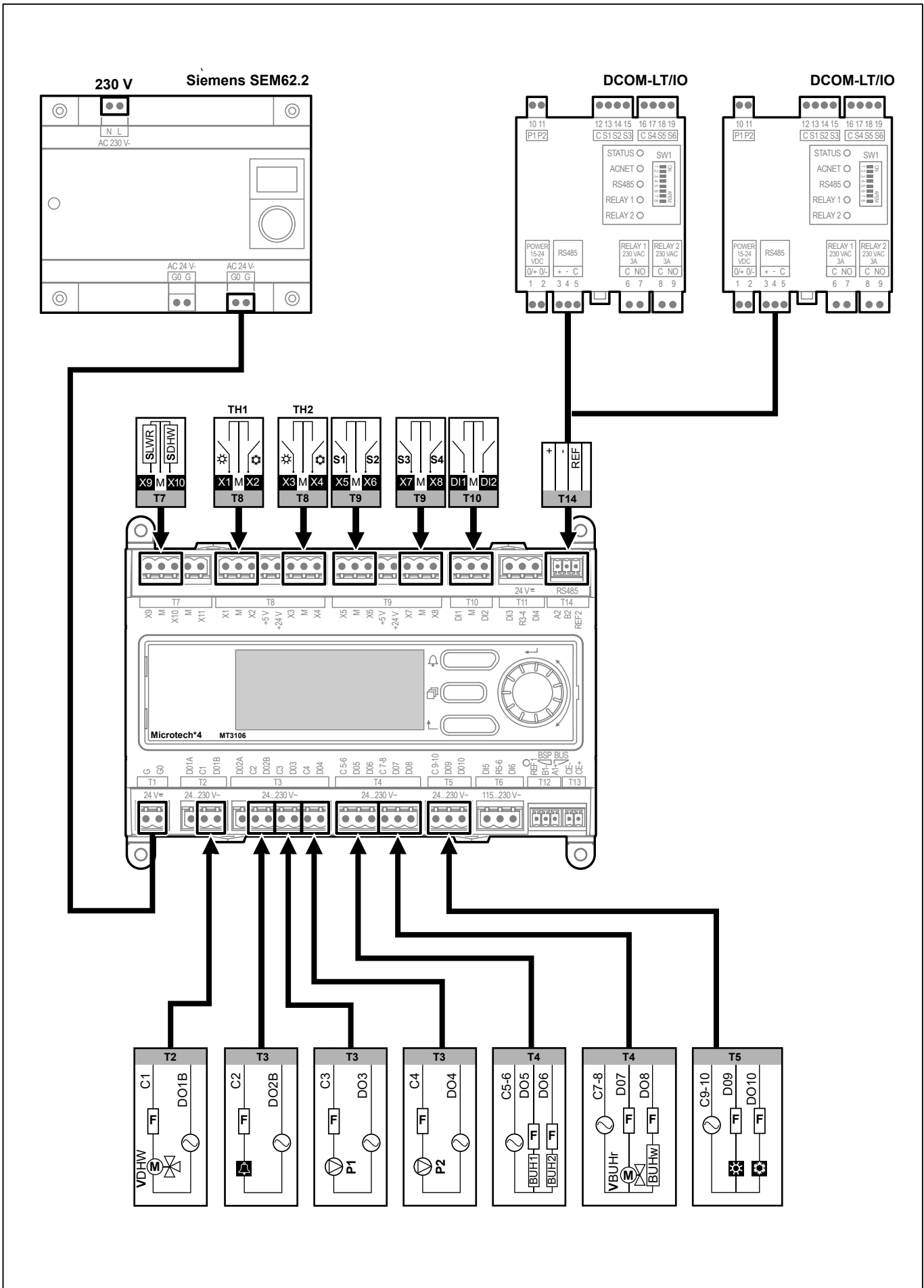




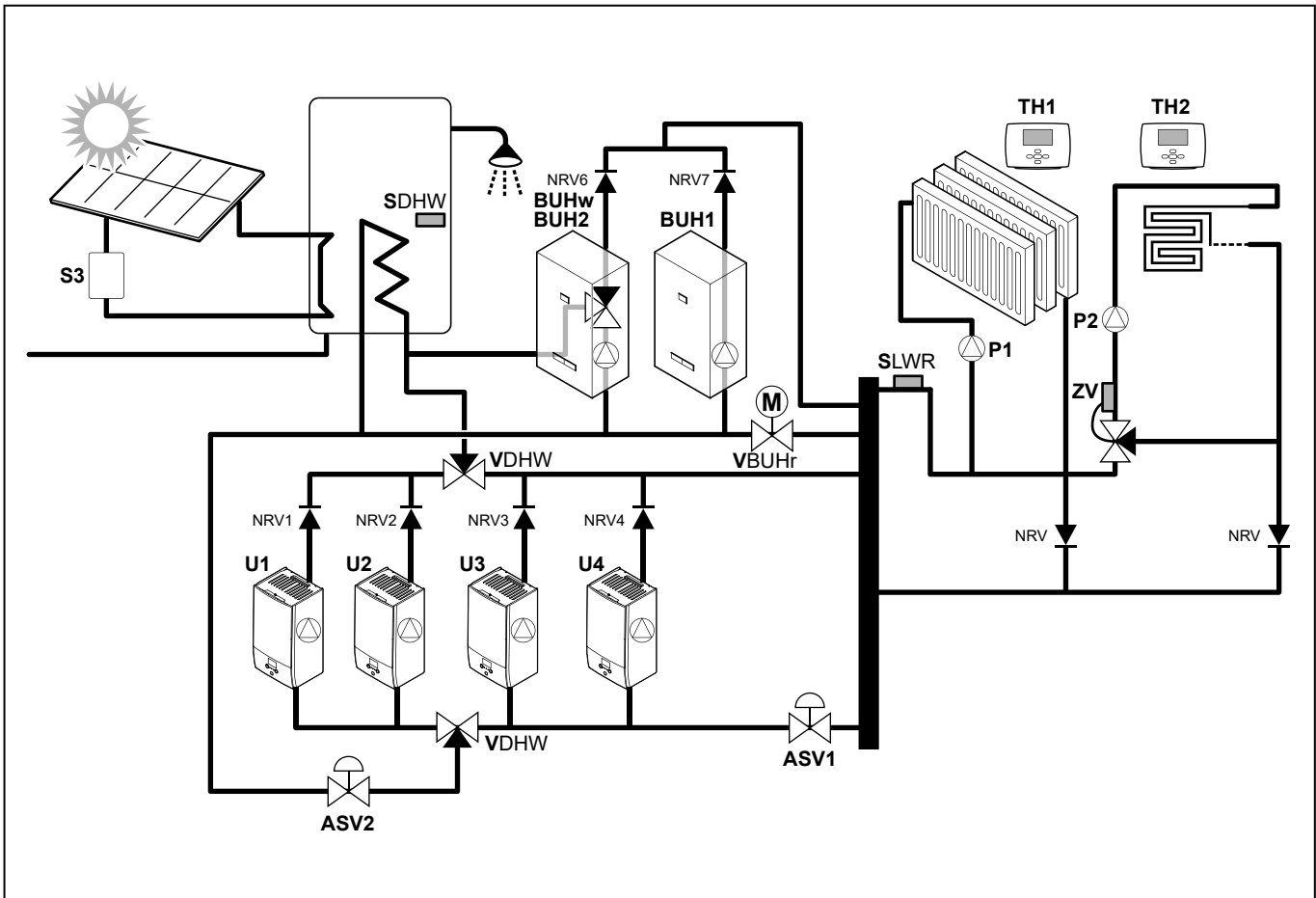
# Installation manual

## Central control for hydroboxes





<b>Digital inputs:</b>		<b>X1~X8</b>	<b>DI1~DI2</b>
Digital signal (binary)	For voltage free contacts		
Sensing voltage/current	24 V DC / 6 mA	24 V DC / 8 mA	
Contact resistance	≤200 Ω (closed), ≥50 kΩ (open)		
Delay	10 ms		
Pulse frequency	≤20 Hz	≤60 Hz	
<b>Digital outputs: DO1A~DO8</b>			
Relay: Type, contact	C1, C2, monostable, NO/NC C3~C7-8, monostable, NO		
Switching voltage range	12~250 V AC (45~65 Hz) 12~30 V DC		
Switching current range			
NO contact	0.01~4 A AC	0.01~4 A DC	
NC contact	0.01~2 A AC	0.01~2 A DC	
Contact load rating			
NO contact	4 A @ 250 V AC	3 A @ 30 V DC	
NC contact	2 A @ 250 V AC	1 A @ 30 V DC	
External supply line fusing	≤6.3 A non-renewable fuse or circuit breaker, type B, C or D		
<b>TRIAC outputs: DO9~DO10</b>			
Switching voltage range	19~250 V AC		
Switching current (resistive)	Max. 500 mA / Min. 30 mA (cos φ 1~0.8)		
Maximum switch-on current	1.5 A (for ≤ 1 sec)		
External supply line fusing	≤2.0 A non-renewable fuse or circuit breaker, type B, C or D		



**EN INFORMATION**

For more information, see the installer reference guide.

Digital files on <https://www.daikin.eu>. Use the search function 🔍 to find your model.

## 1. About this document

### Target audience

Authorised installers

### Documentation set

This document is part of a documentation set. The complete set consists of:

- Installer reference guide
- Installation manual

The original instructions are written in English. All other languages are translations of the original instructions.

## 2. Disposal requirements



Your product is marked with this symbol. This means that electrical and electronic products may NOT be mixed with unsorted household waste. Do NOT try to dismantle the system yourself: dismantling the system MUST be done by an authorised installer and MUST comply with applicable legislation.

Products MUST be treated at a specialised treatment facility for reuse, recycling and recovery. By ensuring this product is disposed of correctly, you will help to prevent potential negative consequences for the environment and human health. For more information, contact your installer or local authority.

## 3. Legal note

### Software used

All open source software components used in this product (including copyright owners and license agreements) can be viewed on the controller's internal web server:

[http://ip\\_address\\_of\\_the\\_device/licenses.html](http://ip_address_of_the_device/licenses.html)

Default IP address: 192.168.1.42

## 4. Installer safety precautions



### WARNING

Improper installation or attachment of equipment or accessories could result in electrical shock, short-circuit, leaks, fire or other damage to the equipment. ONLY use accessories, optional equipment and spare parts made or approved by Daikin unless otherwise specified.

### 4.1. Preparing the installation site

A safe operation of the device/system, requires an installation location with sufficient space for proper transportation, correct warehousing, mounting, installation, commissioning, operation, and maintenance.

### Installation site requirements

The device/system is designed for the described application installation only, and MUST comply with the following ambient conditions:

Ambient conditions	Permissible range
Temperature	-40~70 °C
Relative humidity	5~90% non-condensing
Ventilation	Ensure sufficient ventilation. The controller generates heat that must be removed to prevent heat buildup.

The device/system MUST comply with the following limitations:

Boundary conditions	Permissible range
Connected communication modules.	-40~60 °C
Reliable process bus communications	-25~70 °C
Reliable LCD legibility	-20~60 °C

Mind the following mounting positions for the central control:

Permitted	Not permitted
Horizontal installation	Suspended from the ceiling (above head)
Vertical installation Note that the communication interface on the central control must be on top.	Laying on flat surfaces

### 4.2. Mounting the central control

Proceed as follows to connect the central control to the DIN rails:

- 1 Put the 4 fastening sliders to the extended position using a screwdriver.
- 2 Attach the controller to the DIN rails.
- 3 Press the 4 fastening sliders to the retracted position.



### INFORMATION

The following DIN rails according to EN60715 are permitted:

- TH 35-7.5
- TH 35-15

### 4.3. Connecting the electrical wiring



### WARNING

- All wiring MUST be performed by an authorised electrician and MUST comply with the applicable national wiring regulation.
- Make electrical connections to the fixed wiring.
- All components procured on-site and all electrical construction MUST comply with the applicable legislation.



### WARNING

Fuses, switches, wiring and grounding MUST comply with the local safety regulations for electrical installations. Observe all local and currently valid laws and regulations.



### WARNING

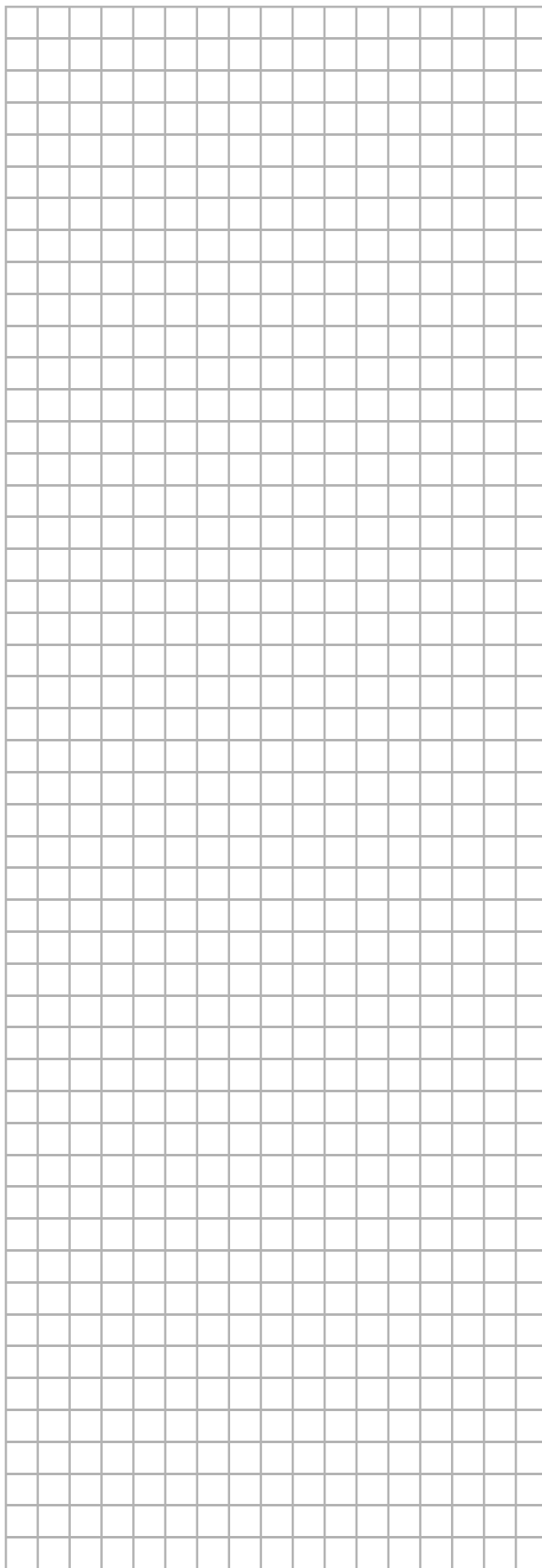
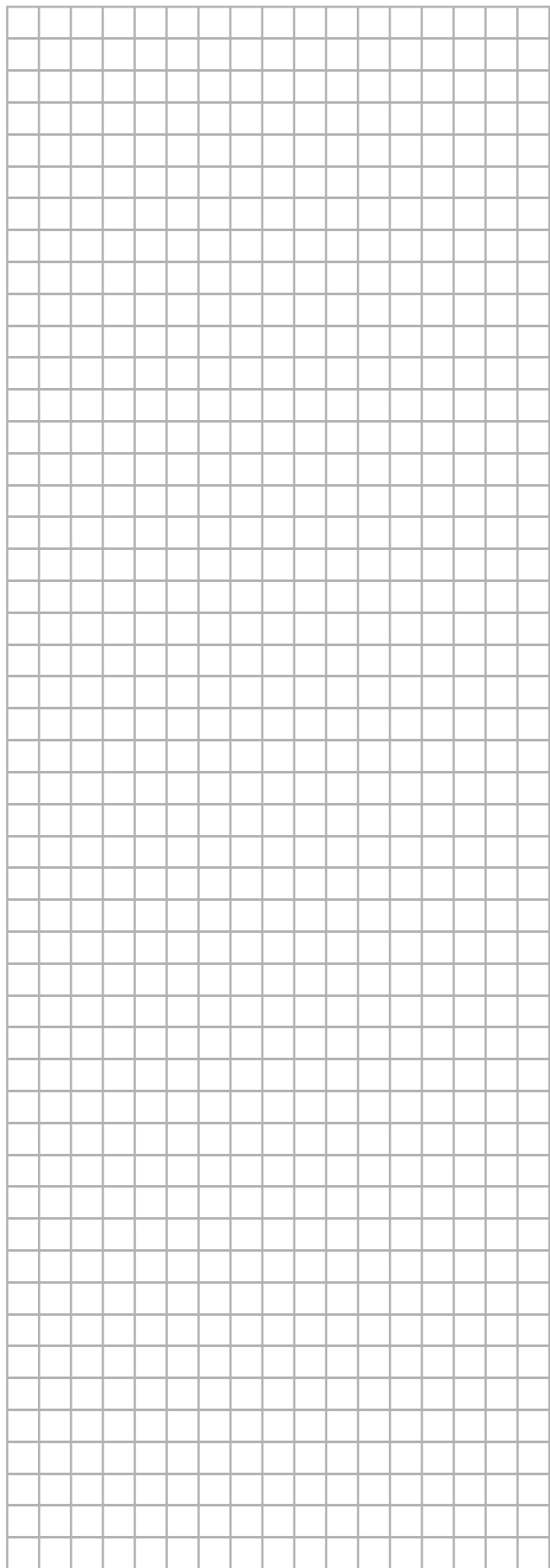
Do NOT use the bottom RS485 port (T12).

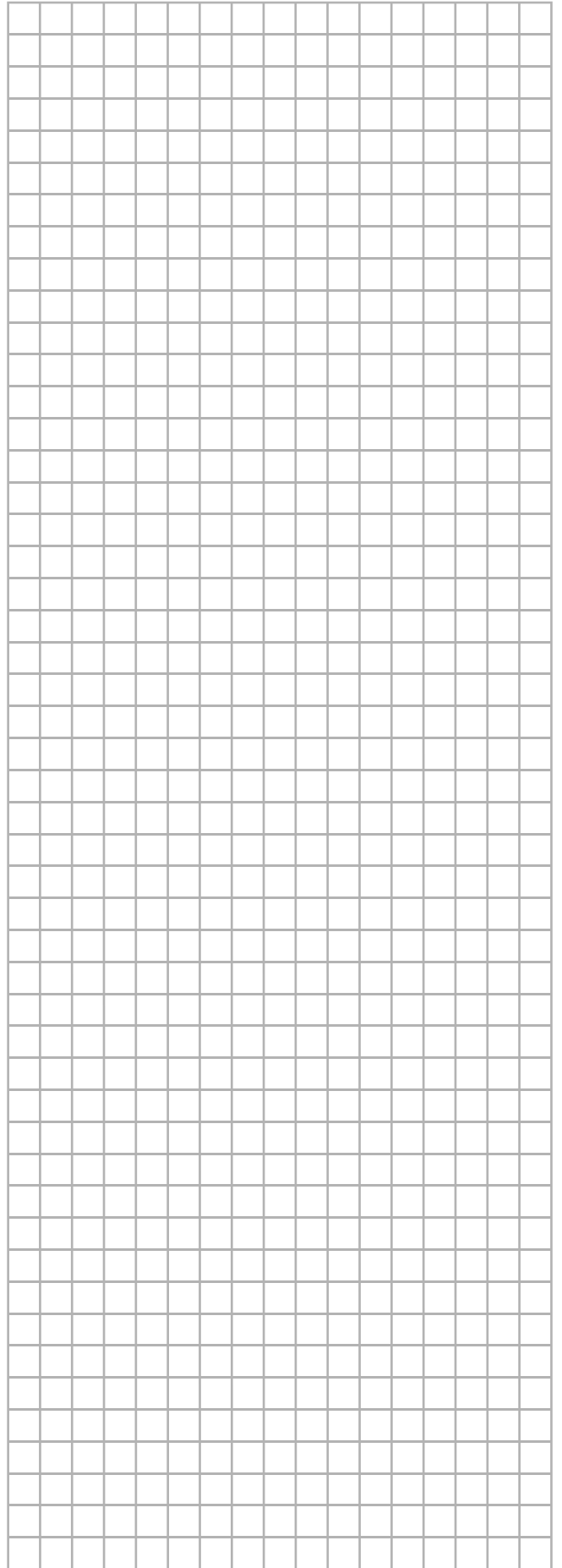
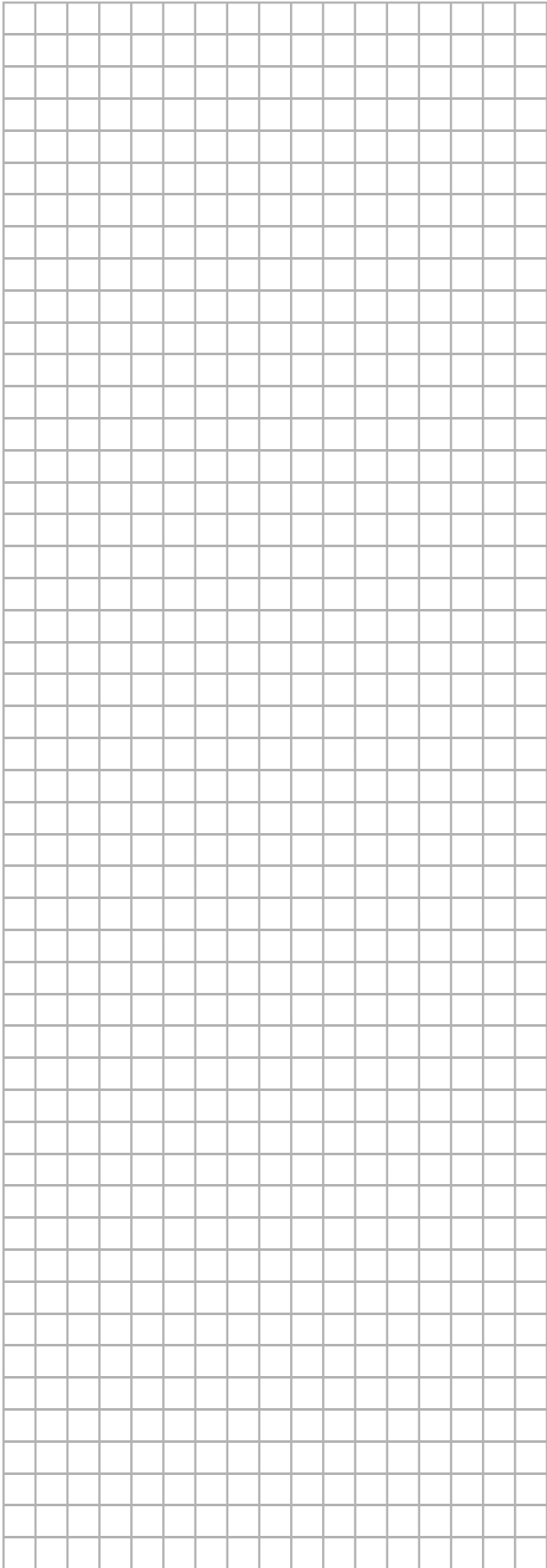


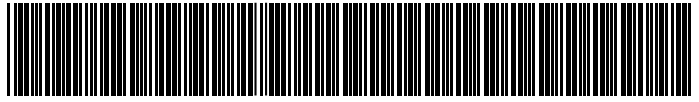
### WARNING

The following applies to the digital outputs DO1A~DO10:

- Do not mix SELV/PELV and mains power on the same terminal block.
- Use external protection circuit for inductive load.
- The outputs are not fused internally. An external fuse is required.







\*4P757157-1 0000000U\*

Copyright 2023 Daikin