

Our mission:  
Your perfect  
atmosphere



Information for end users:  
top efficiency and comfort range



FTXZ-N, p. 12



FTXA-AS, p. 14

# Get ready

## The evolution of pure comfort

### Discover the next generation of comfort

Only the best is good enough when it comes to your home. Now, Daikin has taken comfort to a whole new level by reimagining a pure atmosphere with its Bluevolution range. When you choose Daikin technologies, you can count on year-round comfort, energy efficiency, reliability and control.

High seasonal efficiency ensures you stay comfortable in winter and summer, without

breaking the bank. The R-32 refrigerant is more environmentally friendly than previous refrigerants. Daikin's many years of experience and broad range of products means you can count on selecting a reliable, long lasting product perfectly suited for your home. And even when you aren't home, you can adjust room temperature and operating mode with a user-friendly smartphone app. Let Daikin help you create the perfect atmosphere.



FTXJ-MW, p. 16



# Breathe deeply

# Pure atmosphere

## A wealth of choice

Daikin's solutions are attractive, quiet and energy efficient. Whether for one room or many, Daikin has the right unit for you.

### Why choose Daikin?

The Daikin series with R-32 refrigerant offers you the best in energy efficiency, design and style. Whether you want to heat or cool one or multiple rooms, with wall mounted or concealed ceiling units, Daikin has a model for you.



### Pure comfort: Ururu Sarara

Total climate control with (de-)humidification, air purification and ventilation and the highest heating and cooling efficiency.



### Unexpected: Stylish

Where innovation meets creativity.



### Iconic comfort: Daikin Emura

Top efficiency and comfort in a superior design.



#### Smart comfort: Perfera

Attractive, wall mounted design with perfect indoor air quality.



#### Discreet comfort: Comfora

Stylish front panel design blends with every interior including dry programme.



#### Good value for money: Sensira

Wall mounted unit for low energy consumption and pleasant comfort.



#### Concealed ceiling unit: FDXM-F3

Only the suction and discharge grilles are visible.



#### Floor standing unit: FVXM-F

Floor standing unit for optimal heating comfort thanks to dual airflow



## Choose the right partner: pair and multi applications

Select the corresponding outdoor unit to best suit your needs. Pair applications connect one outdoor unit with one indoor unit. Space-saving multi units can connect up to five indoor units in multiple rooms.



#### Combine air conditioning with optimal heating and hot water comfort:

Daikin Altherma hybrid heat pump. Hybrid technology combining gas and air to water heat pump for heating and hot water

#### For commercial applications:

Sky air indoor units

Choose between a round flow or fully flat cassette, concealed floor standing or ceiling suspended unit.



# Why choose Daikin?



## ✓ Energy efficiency

Creating a fresh climate at home is about more than just pure comfort. Daikin systems are easy on your wallet and good for the environment, too. The next-generation refrigerant R-32 and optimised compressors make sure you stay in your comfort zone.



## Seasonal efficiency in heating and cooling

Daikin's range of advanced energy-saving technologies provide high seasonal efficiencies in heating and cooling up to A+++, and our redesigned swing compressors are more efficient. Seasonal efficiency is a new way of rating heating and cooling products based on their energy efficiency over an entire year.

## R-32: more efficient, better for the environment

Daikin uses R-32 refrigerant, a unit that emits fewer CO<sub>2</sub> emissions. That means they have lower global warming potential and are overall more efficient.

## ✓ Experience perfect comfort

### Superbly silent

Loud units are a thing of the past. Daikin systems are nearly inaudible. Enjoy year-round well-being without distracting noise.

### Better air quality with the Daikin Flash Streamer

Daikin's Ururu Sarara and Stylish and Perfera are all-in-one heating and cooling units that purify the air year round. Using electrons to trigger chemical reactions with air molecules, the Flash Streamer breaks down viruses, leaving you with perfect, allergen-free air.



High-speed electrons generated by the Flash Streamer



## Intelligent air distribution

Air conditioners make rooms comfortable by moving fresh air around the room. Daikin's technology goes the extra mile so you don't feel the movement of air on your skin.

### intelligent thermal sensor

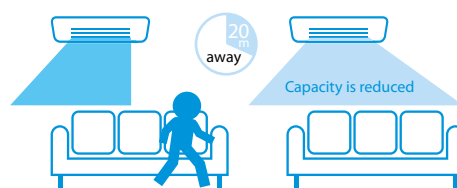
After determining the current room temperature, the intelligent thermal sensor distributes air evenly throughout the room before switching to an airflow pattern that directs warm or cool air to areas that need it.

### Coanda effect

The Coanda effect optimises the airflow for a comfortable climate. By using specially designed flaps, a more focused airflow allows a better temperature distribution throughout the whole room. The unit determines the airflow pattern based on whether the room needs heating or cooling. By creating two different airflow patterns, it prevents draughts and establishes a more stable and comfortable room temperature for occupants.

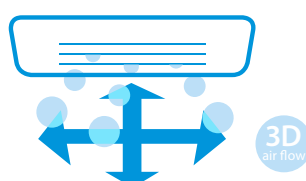
## 2-area motion detection sensor

If you leave the room, your system switches into energy-saving mode. When you come back, it returns to the original setting, but blows the air away from you: no cold draughts.



## 3D air flow

The room's temperature stays constant by combining vertical and horizontal auto swing. Air is distributed evenly throughout the room and reaches the corners, even in larger spaces.







## Always in control, no matter where you are



The Daikin Online Controller application can control and monitor the status of your heating system or up to 50 split air conditioning units and allows you to:

### Monitor:

- › The status of your air conditioner or heating system
- › Consult **energy consumption graphs**

### Control:

- › The **operation mode**, set temperature, fan speed and powerful mode, air direction and filtering (streamer) function
- › Remotely control your system and domestic hot water
- › **Zone control**: control **multiple** units at once (Split and Daikin Altherma integrated bi-zone only)

### Schedule:

- › Schedule the set temperature and operation mode with up to **6 actions per day for 7 days**
- › Enable **holiday mode**
- › View in an intuitive mode
- › 3<sup>rd</sup> party products & services integration via IFTTT
- › Demand control/power power limitation (Split only)







## If this, then that

Programme your unit to reflect your lifestyle. Connectable with different appliances via the iFTTT platform, you can control all element of your home from a distance. For example: If you leave your house, then your heating will turn off.

## IFTTT: make your work flow

IFTTT is a solution that connects compatible 3rd party products and services (smart meters, lights, thermostats, ...), so they work best for you.

Within IFTTT, 2 operation set-ups can be made:

- › DO: it simply executes an action (e.g.: on/off)
- › IFTTT stands for If This Then That and allows you to automate actions (Then That) depending on certain triggers (If This)

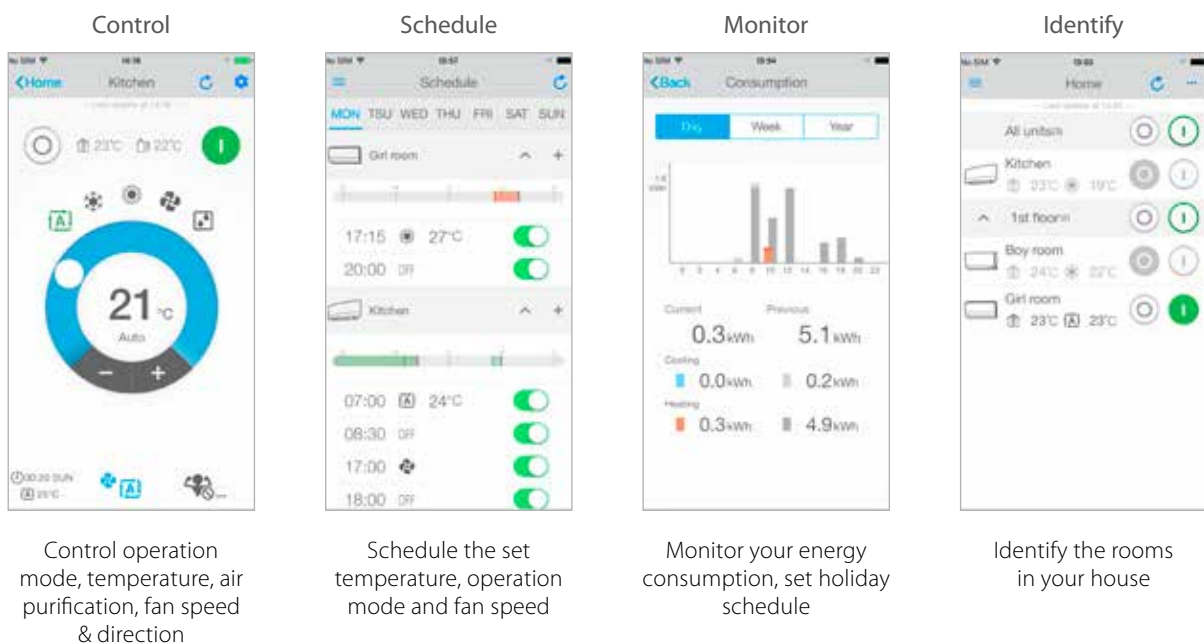
## Example

**IF** you exit an area, **THEN** turn off the heating.

*The trigger is location, which is determined by your smartphone. If you leave an area, such as your house for example, your heating will turn off automatically.*



## App with intuitive lay-out



## ✓ Service: supporting tools

# Daikin service

Creating the perfect indoor climate goes beyond purchasing and installing a product. It's also about achieving year-round comfort, energy efficiency, reliability and control. At Daikin, we offer a selection of support and maintenance services to ensure your system achieves optimal performance throughout its lifetime.

### An optimal installation at minimal cost

Through our support services a well maintained installation achieves:

- ✓ Higher energy efficiency
- ✓ A longer life cycle
- ✓ Meets the latest legal and regulatory requirements

### Supplier and service provider

From selecting the right climate solution to starting up, monitoring and maintaining it, Daikin is ready to support you through every step of the process. Even if you do not have a Daikin installation, you can still benefit from Daikin services provided by our helpdesk staff, and our team of qualified specialists and service engineers.

### What we offer

- ✓ **Operation, maintenance and repairs**  
Together with our Service Partners, we offer a range of service plans to oversee, manage and monitor your installation
- ✓ **Upgrades and optimisations**  
To enhance the performance and extend the lifetime of your system, we have developed a variety of upgrades
- ✓ **Daikin commissioning service**  
From the start up and testing to the final fine-tuning, our Daikin Service representatives are there to offer support for every step of the installation process. Our effective and efficient practices help all installers ensure a Daikin installation continues to run at peak performance
- ✓ **Daikin project support and helpdesk**  
Whether it's selecting the right solution for your application or integrating our HVAC-R systems into your building management system, our experienced specialists and engineers are ready to assist you
- ✓ **Daikin warranty policy**  
Daikin has a broad and transparent warranty policy. In specific contracts you can get, in addition to the factory warranty on parts, also warranty on labour
- ✓ **Components that you can trust**  
All the components that make up a Daikin solution are high quality. This means that if a component is replaced by a Daikin installer, you can rest assured that your installation will maintain its peak efficiency and performance.



# Stand By Me, my climate of security

With your customer's new Daikin installation and Stand By Me service programme, you can rest assured they are benefiting from the best comfort, energy efficiency, usability and service available on the market.



## Free warranty extension



The first advantage of **Stand By Me** is a free warranty extension:

- ✓ applies to both labour and parts
- ✓ begins immediately after registration



## Quick follow-up by Daikin service partners

Daikin service partners are automatically notified when a customer registers their installation on **www.standbyme.daikin.eu** and needs maintenance.

Your customer is guaranteed:

- ✓ quick and reliable service
- ✓ management of all information related to their installation such as, registration documents, attendance records, maintenance records, etc.
- ✓ immediate access to the correct information contributes to flawless service



## Extended warranty on parts

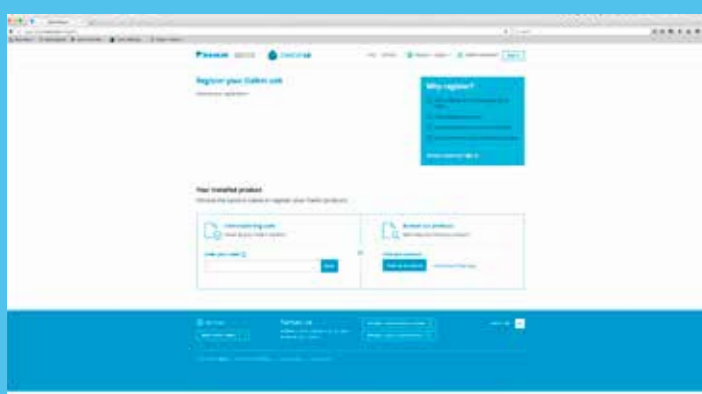
For a small fee, customers can extend the warranty on specific parts. **Stand By Me** guarantees:

- ✓ that each component is replaced quickly
- ✓ helps avoid financial surprises
- ✓ long life and smooth operation and all other benefits of a Daikin installation
- ✓ reliable service from official Daikin service partners

Daikin service partners work exclusively with Daikin parts and have all of the necessary technical knowledge to solve any issue that may arise

Register  
your Daikin unit:

[www.standbyme.daikin.eu](http://www.standbyme.daikin.eu)



# Ururu Sarara

## Pure comfort

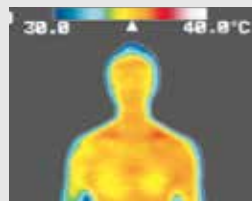
### Ururu = humidification

#### Temperature cannot measure how a room feels.

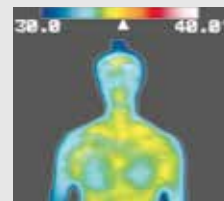
The air around us naturally contains a certain amount of moisture, known as humidity. During winter making the air too dry not only makes your room feel cooler (which might make you turn up the heating unnecessarily), it leads to sore throats and dry skin. It can even affect your furniture, wooden floors, books and art works.

The Ururu Sarara's intelligent humidification system draws in just the right amount of latent moisture from outside.

The thermograph shows the temperature distribution of the skin 30 min. after entry into the room



Temperature: 25°C  
Humidity: 80%  
You feel **warm** in humid air, even at a constant temperature





Temperature: 25°C  
Humidity: 50%  
You feel comparatively **cooler** in dehumidified air



FTXZ-N + RXZ-N

BLUEEVOLUTION

BLUEEVOLUTION

  	Efficiency							Indoor unit				Outdoor unit					
	Cooling capacity	Heating capacity	Seasonal efficiency (according to EN14825)					Dimensions	Sound pressure level		Sound power level	Sound power level	Refrigerant				
			Cooling/Heating (Average climate)		Cooling	Heating (Average climate)	Cooling/Heating (Average climate)		Unit	Cooling			Heating	Cooling/ Heating (dBA)	Cooling/ Heating (dBA)	Type/GWP	Charge (kg/TCO2Eq)
			Energy efficiency class	Pdesign (kW)													
FTXZ25NV1B / RXZ25NV1B	0.6/2.5/3.9	0.6/3.6/7.5		2.50/3.50	9.54	5.90	92/831		19/26/33/38	19/28/35/39	54/56	59/59					
FTXZ35NV1B / RXZ35NV1B	0.6/3.5/5.3	0.6/5.0/9.0	A+++ / A+++	3.50/4.50	9.00	5.73	136/1,100	295x798x372	19/27/35/42	19/29/36/42	57/57	61/61	R-32/675	1.34/0.9			
FTXZ50NV1B / RXZ50NV1B	0.6/5.0/5.8	0.6/6.3/9.4		5.00/5.60	8.60	5.50	203/1,427		23/30/38/47	24/31/38/44	60/59	63/64					





## Ventilation and air purification

### Fresh air, even with closed windows

Unlike a conventional air conditioner, the Ururu Sarara brings fresh, conditioned air into the room at the desired temperature without any thermal loss. The unit's self-cleaning filter collects dirt and particles from the air, which not only keeps your air clean but keeps the Ururu Sarara performing at top efficiency. Daikin's Flash Streamer technology makes sure that the air is automatically purified and odour-free.



## Sarara = dehumidification

### There is more than one way to cool a room in summer

During summer, ambient humidity rises – and just as dry air feels cooler, humid air feels warmer, making rooms feel hot and oppressive. With conventional systems, you would have no option but to bring down the temperature – wasting energy and electricity.

But the Ururu Sarara's intelligent dehumidification offers a more elegant solution. It automatically transfers the excess moisture out of the room – while always maintaining an even temperature – thus taking much less effort to make you feel comfortable.

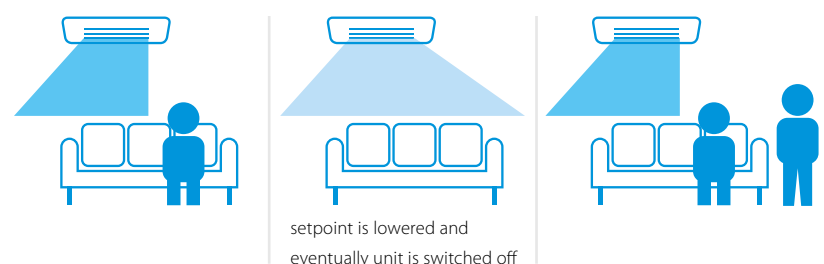
## Optimal airflow pattern for your home

### 3-area motion detection sensor

It goes without saying that a room only needs to be cooled or heated when you are actually in it. Nor do you want blasts of air over you or your guests while you are there. That is why Daikin developed an 'motion detection sensor' for the Ururu Sarara.

It is a motion detector that not only knows when you are in the room (and turns the power down if you are not). It also knows where you are in the room, and directs the air flow away from you. Quite simply a smarter way to control a room's temperature without ruining its atmosphere.

## How does the 3-area motion detection sensor work?



# Stylish

## Designed for comfort

Most consumers today are looking for an air conditioning system that combines the best of performance and design. With Stylish, Daikin balances function and aesthetic to create an innovative product that suits any interior.

### Why choose Stylish?

Stylish brings together excellent design and technology to deliver a total climate solution for any interior. Measuring only 189 mm, Stylish is the thinnest unit on the market in the design segment for wall mounted units and uses innovative features to achieve the best in comfort, energy efficiency, reliability and control.

### Award-winning design

Inspired by its predecessors, Daikin Emura and Ururu Sarara, Stylish earned the Good Design Award and iF Award for its innovative look and functional capabilities. These awards recognise Stylish for its ability to achieve new standards of comfort and energy efficiency in the HVAC-R industry.



reddot award 2018  
winner



**GOOD DESIGN  
AWARD 2017**



### Stylish design benefits

- › Users can choose from three distinct colours (white, silver and blackwood)
- › Curved corners create an unobtrusive and space-saving design
- › Perfect indoor air quality: the flash streamer captures viruses and allergens leaving you with a more clean indoor environment
- › Simple panel enables variation in texture and colour to easily blend into any room

### Intelligent and efficient design

- › Smart sensors optimise performance
- › Coanda effect optimises room temperature distribution
- › Improved fan offers high-efficiency with low sound levels
- › Advanced technology achieves more comfort and energy efficiency
- › A compact and functional design suitable for all interiors
- › Earns A+++ for heating and cooling
- › Achieves higher energy efficiency and lower environmental impact with refrigerant R-32
- › New technologies create ideal room temperatures
- › Enhanced fan ensures the unit is inaudible
- › Easily controlled with Daikin Online Controller
- › Flash Streamer technology provides fresh, healthy air



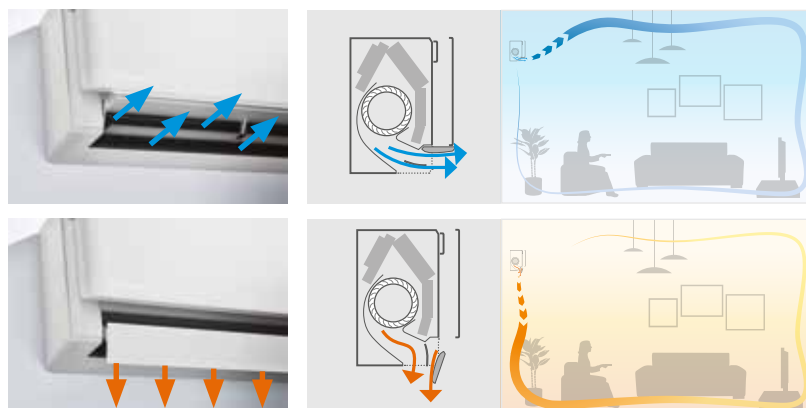
## The Coanda effect

Already present in the Ururu Sarara, the **Coanda effect** optimises the airflow for a comfortable climate. By using specially designed flaps, a more focused airflow allows a better temperature distribution throughout the whole room.

### How it works

Stylish determines the airflow pattern based on whether the room needs heating or cooling. When Stylish is in heating mode, two flaps will direct air downward (vertical airflow), while in cooling mode the flaps will move air upward (ceiling airflow).

By creating two different airflow patterns, Stylish prevents draughts and establishes a more stable and comfortable room temperature for occupants.



White: FTXA-AW





Silver: FTXA-AS



Blackwood: FTXA-AT

stylish FTXA-AW/S/T + RXA-A

BLUEvolution

  	Efficiency							Indoor unit			Outdoor unit			
	Cooling capacity	Heating capacity	Seasonal efficiency (according to EN14825)					Dimensions	Sound pressure level		Sound power level	Sound power level	Refrigerant	
			Cooling/Heating (Average climate)		Cooling	Heating (Average climate)	Cooling/Heating (Average climate)		Unit	Cooling			Heating	
			Energy efficiency class	Pdesign (kW)							SEER	SCOP/A		Annual energy consumption (kWh)
CTXA15AW/S/T	multi connection only							295x798x189	21/25/39	21/25/39	57	multi connection only		
FTXA20AW/S/T / RXA20A2V1B	1.3/2.0/2.6	1.30/2.50/3.50	A+++ / A+++	2.00/2.40	8.75	5.15	80/653		19/25/39	19/25/39		59/59	R-32/675.0	0.76/0.52
FTXA25AW/S/T / RXA25A2V1B	1.3/2.5/3.2	1.30/2.80/4.70		2.50/2.45	8.74	5.15	101/666		19/25/40	19/25/40				
FTXA35AW/S/T / RXA35A2V1B	1.4/3.4/4.0	1.40/4.00/5.20		3.40/2.50	8.73	5.15	137/680		19/25/41	19/25/41	60	61/61		
FTXA42AW/S/T / RXA42A2V1B	1.7/4.2/5.0	1.70/5.40/6.00	A++ / A++	4.20/3.80	7.50	4.60	196/1,150		21/29/45	21/29/45		62/62		1.30/0.88
FTXA50AW/S/T / RXA50A2V1B	1.7/5.0/5.3	1.70/5.80/6.50		5.00/4.00	7.33	4.60	239/1,217		24/31/46	24/33/46				

# Daikin Emura

## Iconic comfort



### Daikin Emura has style

Clean, minimal and sleek, Daikin Emura is designed in Europe for Europe and offers elegant and noteworthy climate control. But since its smart technology makes your home so comfortable, you'll almost forget it's there.

#### Why choose Daikin Emura?

- › Top design with two stylish finishes, silver and anthracite or pure matte white
- › High seasonal efficiencies up to A+++
- › Whisper quiet sound levels as low as 19 decibels.
- › Control via a smartphone app or a user friendly remote controller
- › 2-area motion detection sensor
- › Inaudible to hear in silent mode
- › Indoor air quality thanks to titanium apatite deodorising filter and new silver allergen removal and air purifying filter

### Outstanding design

Daikin Emura has been awarded the Reddot design award 2014, German Design Award – Special mention 2015, Focus Open 2014 Silver, Good Design Award 2014 and iF Design award 2015.



reddot award 2014  
winner



German  
Design Award  
SPECIAL  
MENTION 2015



Focus Open 2014  
Silver



GOOD DESIGN  
AWARD 2014


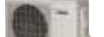






## FTXJ-MW/S + RXJ-M

BLUEEVOLUTION

  	Efficiency							Indoor unit			Outdoor unit					
	Cooling capacity	Heating capacity	Seasonal efficiency (according to EN14825)					Dimensions	Sound pressure level		Sound power level	Sound power level	Refrigerant			
			Cooling/Heating (Average climate)		Cooling	Heating (Average climate)	Cooling/Heating (Average climate)		Cooling	Heating			Cooling/Heating (dBA)	Cooling/Heating (dBA)	Type/GWP	Charge (kg/TCO2eq)
			Energy efficiency class	Pdesign (kW)												
FTXJ20MV1BS / RXJ20M2V1B	2.3	2.5	A+++ / A++	2.30/2.10	8.73	4.61	92/638	303x998x212	19/25/38	19/28/40	54/56	61/62				
FTXJ25MV1BS / RXJ25M2V1B	2.4	3.2		2.40/2.70	8.64	4.60	97/822			19/28/41						
FTXJ35MV1BS / RXJ35M2V1B	3.5	4	A++ / A++	3.50/3.00	7.19	170/913	20/26/45		20/29/45	59/59	63/63	1.30/0.9				
FTXJ50MV1BS / RXJ50MV1B	4.80	5.80	A++ / A+	4.80/4.60	7.02	239/1,505	32/35/46		32/35/47	60/60						
FTXJ20MV1BW / RXJ20M2V1B	2.3	2.5	A+++ / A++	2.30/2.10	8.73	4.61	92/638		19/25/38	19/28/40	54/56	61/62	0.72/0.5			
FTXJ25MV1BW / RXJ25M2V1B	2.4	3.2		2.40/2.70	8.64	4.60	97/822			19/28/41						
FTXJ35MV1BW / RXJ35M2V1B	3.5	4	A++ / A++	3.50/3.00	7.19		170/913		20/26/45	20/29/45	59/59	63/63	1.30/0.9			
FTXJ50MV1BW / RXJ50MV1B	4.80	5.80	A+++ / A+	4.80/4.60	7.02	239/1,505				32/35/46	32/35/47			60/60		



# Perfera

The feel-good vision of the future



## Enjoy state-of-the-art comfort



**BLUEVOLUTION**

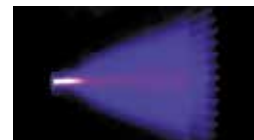
This unit typifies Daikin's future vision of air conditioning. Wrapped in fresh European design, it impresses with brilliant seasonal efficiency values up to A+++ without compromising comfort. The exceptional Daikin Flash Streamer guarantees superior air purification. With the Daikin online controller app, you have control from wherever you

are. It also displays energy consumption for all R-32 products.. 3-D air flow and 2-area motion detection sensor create perfect and non-invasive air flow. And all this with superbly quiet operation. This full-range series is the ideal choice for most applications. Enjoy a cosy home – without accepting compromises.



## Better air quality with the Daikin Flash Streamer

This all-in-one heating and cooling unit purifies the air year round. Using electrons to trigger chemical reactions with air molecules, the flash streamer captures viruses and allergens leaving you with a more clean indoor environment.



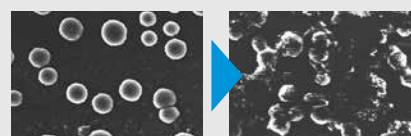
## Flash Streamer technology



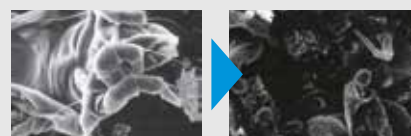
Viruses and allergens were placed on the electrode of the streamer discharge unit and then photographed through an electron microscope after being irradiated.

(Testing organization: Yamagata University and Wakayama Medical University)

Virus before and after irradiation



Fungal allergens before and after irradiation





Pollen-based allergen before and after irradiation



## C/FTXM-M + RXM-M(9)

BLUEVOLUTION



  	Efficiency							Indoor unit			Outdoor unit			
	Cooling capacity	Heating capacity	Seasonal efficiency (according to EN14825)					Dimensions	Sound pressure level		Sound power level	Sound power level	Refrigerant	
			Cooling/Heating (Average climate)		Cooling	Heating (Average climate)	Cooling/Heating (Average climate)		Cooling	Heating				
			Energy efficiency class	Pdesign (kW)									SEER	SCOP/A
CTXM15M	multi connection only							294x811x272	19/25/33/41	20/26/34/39	57/54	multi connection only		
FTXM20M2V1B / RXM20M3V1B9	1.3/2.0/2.6	1.30/2.50/3.50	A+++ /A+++	2.00/2.30	8.53		83/632					59/59	R-32/675.0	0.76/0.52
FTXM25M2V1B / RXM25M3V1B9	1.3/2.5/3.2	1.30/2.80/4.70		2.50/2.40	8.52	5.10	103/659							
FTXM35M2V1B / RXM35M3V1B9	1.4/3.4/4.0	1.40/4.00/5.20		3.40/2.50	8.51		140/686							
FTXM42M2V1B / RXM42M3V1B9	1.70/4.20/5.00	1.70/5.40/6.00	A++ /A++	4.20/4.00	7.50	4.60	196/1,216	300x1,040x295	21/30/39/45	21/29/39/45	60/60	62/62		
FTXM50M2V1B / RXM50M3V1B9	1.70/5.00/5.30	1.70/5.80/6.50		5.00/4.60	7.33								239/1,400	32/36/40/44
FTXM60M2V1B / RXM60M3V1B9	1.90/6.00/6.70	1.70/7.00/8.00	A++ /A+	6.00/4.60	6.90	4.30	304/1,496		34/37/42/46	33/36/41/45	60/59	63/63	R-32/675.0	1.45/0.98
FTXM71M2V1B / RXM71M2V1B	2.30/7.10/8.50	2.30/8.20/10.20	A+++ /A	7.10/6.20	6.11	3.81	407/2,276		35/38/43/47	34/37/42/46	60/61	66/67		1.15/0.78

## Providing high efficiency and comfort

- › Whisper quiet in operation down to 20 dBA
- › Online controller (optional): control your indoor from any location with an app, via your local network or internet and keep an overview on your energy consumption
- › The unit's compact dimensions makes it ideal for renovation projects, especially for above door installation
- › Seasonal efficiency values up to A++ in cooling and heating
- › Space saving contemporary wall mounted design

## FTXP-L + RXP-L



BLUEVOLUTION

 	Efficiency							Indoor unit				Outdoor unit		
	Cooling capacity	Heating capacity	Seasonal efficiency (according to EN14825)					Dimensions	Sound pressure level		Sound power level	Sound power level	Refrigerant	
			Cooling/Heating (Average climate)		Cooling	Heating (Average climate)	Cooling/Heating (Average climate)	Unit	Cooling	Heating	Cooling/ Heating (dBA)	Cooling/ Heating (dBA)	Type/GWP	Charge (kg/TCO2Eq)
			Energy efficiency class	Pdesign (kW)										
FTXP20L2V1B / RXP20L2V1B	1.3/2.00/2.6	1.30/2.50/3.50	A++/A++	2.00/2.20	6.79	4.65	104/662	286x770x225	20/25/39	21/28/39	55/55	60/61	R-32/675.0	0.70/0.48
FTXP25L2V1B / RXP25L2V1B	1.3/2.50/3.0	1.30/3.00/4.00		2.50/2.40	6.92	4.61	127/728		20/26/40	21/28/40	58/58	62/62		
FTXP35L2V1B / RXP35L2V1B	1.3/3.50/4.0	1.30/4.00/4.80		3.50/2.80	6.62	4.64	186/845		20/27/43	21/29/40	58/58	62/62		
FTXP50L2V1B / RXP50L2V1B	-/5.0/-	-/6.0/-	A++	-	5.0	260	295x990x263	31/34/43	30/33/42	59/61	61/61	R-32/675.0	1.40/0.95	
FTXP60L2V1B / RXP60L2V1B	-/6.0/-	-/7.0/-			6.0	308		33/36/45	32/35/44	60/62	63/63			
FTXP71L2V1B / RXP71L2V1B	-/7.1/-	-/8.2/-	A		7.1	469		34/37/46	33/36/45	62/62	66/65			1.15/0.78

## Wall mounted unit, offering good value for money and ensuring a steady supply of clean air

- › Seasonal efficiency values up to A++ in cooling
- › Online controller (optional): control your indoor from any location with an app, via your local network or internet and keep an overview on your energy consumption
- › Quiet operation down to 21 dB(A)
- › Choosing for an R-32 product, reduces the environmental impact with 68% compared to R-410A and leads directly to lower energy consumption thanks to its high energy efficiency



## FTXF-A + RXF-A

	Efficiency						Indoor unit				Outdoor unit						
	Cooling capacity	Heating capacity	Seasonal efficiency (according to EN14825)				Dimensions	Sound pressure level		Sound power level	Sound power level	Refrigerant					
			Cooling/Heating (Average climate)		Cooling	Heating (Average climate)		Cooling/Heating (Average climate)	Unit			Cooling	Heating	Cooling/ Heating (dBA)	Cooling/ Heating (dBA)	Type/GWP	Charge (kg/TCO2Eq)
			Energy efficiency class	Pdesign (kW)													
	Min./Nom./ Max. (kW)	Min./Nom./ Max. (kW)					Height x Width x Depth (mm)	Silent operation/ Low/High (dBA)	Silent operation/ Low/High (dBA)								
FTXF20A2V1B / RXF20A2V1B	1.3/2.00/2.6	1.30/2.50/3.50	A++/A+	2.00/2.20	6.15/4.10	114/751	83/632	286x770x225	20/25/39	21/28/39	55/55	60/61	R-32/675.0	0.70/0.48			
FTXF25A2V1B / RXF25A2V1B	1.3/2.50/3.0	1.30/2.80/4.00		2.50/2.40	6.22/4.06	141/827	103/659		20/26/40	21/28/40							
FTXF35A2V1B / RXF35A2V1B	1.3/3.30/3.8	1.30/3.50/4.80		3.50/2.80	6.21/4.06	197/965	140/686		20/27/43	21/29/40	58/58	62/62					
FTXF50A2V1B / RXF50A2V1B	1.7/5.00/6.0	1.70/6.00/7.70		5.00/4.60		282/1,584	196/1,216	31/34/43	30/33/42	59/61	61/61	1.40/0.95					
FTXF60A2V1B / RXF60A2V1B	1.7/6.00/7.0	1.70/6.40/8.00		6.00/4.80	6.15/4.06	342/1,655	239/1,400	295x990x263	33/36/45	32/35/44	60/62	63/63	1.45/0.98				

## Wall mounted unit, offering good value for money and ensuring a steady supply of clean air

- › Flat, stylish front panel blends easily within any interior décor and is easier to clean
- › Quiet operation down to 21 dB(A)
- › Seasonal efficiency values up to A++ in cooling

## FTXC-A + RXC-A

  	Efficiency						Indoor unit			Outdoor unit							
	Cooling capacity	Heating capacity	Seasonal efficiency (according to EN14825)				Dimensions	Sound pressure level	Sound power level	Sound power level	Refrigerant						
			Cooling/Heating (Average climate)		Cooling	Heating (Average climate)					Cooling/Heating (Average climate)	Unit	Cooling	Cooling/ Heating (dBA)	Cooling/ Heating (dBA)	Type/GWP	Charge (kg/TCO2Eq)
			Energy efficiency class	Pdesign (kW)													
FTXC25A1B / RXC25A1B	2.56	2.84	A++/A+	2.56/2.41	6.14	4.00	146/773	288x859x209	21/29/40/41	53	58 /-						
FTXC35A1B / RXC35A1B	3.37	3.58		3.37/2.19	6.11		193/768		22/30/41/42	54	60 /-	0.80/0.54					
FTXC50A1B / RXC50A1B	5.48	5.62		5.48/3.57	6.79	4.30	283/1,163	310x1,124x237	32/35/40/44	55	64 /-	1.10/0.74					
FTXC60A1B / RXC60A1B	6.23	6.40		6.24/4.16	6.21	4.21	352/1,385		33/37/43/46	61	65 /-	1.20/0.81					





## Compact concealed ceiling unit

- › Invisible unit as the unit is concealed in the ceiling: only the suction and discharge grilles are visible
- › Improved in-room air quality, higher efficiency and lower maintenance costs as dust can easily be removed with a vacuum cleaner (self cleaning kit option)
- › Compact dimensions, can easily be mounted in a ceiling void of only 240mm

- › Online controller (optional): control your indoor from any location with an app, via your local network or internet and keep an overview on your energy consumption
- › Low energy consumption thanks to DC fan motor
- › Multi zoning kit allows multiple individually controlled climate zones to be served by one indoor unit (option)

## FDXM-F3 + RXM-M9

BLUEVOLUTION



  	Efficiency							Indoor unit				Outdoor unit		
	Cooling capacity	Heating capacity	Seasonal efficiency (according to EN14825)					Dimensions	Sound pressure level		Sound power level	Sound power level	Refrigerant	
			Cooling/Heating (Average climate)		Cooling	Heating (Average climate)	Cooling/Heating (Average climate)		Unit	Cooling			Heating	
			Energy efficiency class	Pdesign (kW)										SEER
Nom. (kW)	Nom. (kW)													
FDXM25F3V1B / RXM25M3V1B9	2.40	3.20	A+/A+	2.40/2.60	5.68	4.24	148/858	200x750x620	27/35	27/35	53/53	59/59	R-32/675.0	0.76/0.52
FDXM35F3V1B / RXM35M3V1B9	3.40	4.00	A/A	3.40/2.90	5.26	3.88	226/1,046					61/61		
FDXM50F3V1B / RXM50M3V1B9	5.00	5.80	-/-	-/-	-	-	-/-	200x1,150x620	30/38	30/38	55/55	62/62	R-32/675	1.40/0.95
FDXM60F3V1B / RXM60M3V1B9	6.00	7.00									56/56	63/63		1.45/0.98

## Floor standing unit

- › Seasonal efficiency values up to A+++ in cooling
- › Its low height enables the unit to fit perfectly beneath a window

- › Online controller (optional): control your indoor from any location with an app, via your local network or internet and keep an overview on your energy consumption
- › Quiet operation: down to 23dBA sound pressure level

## FVXM-F + RXM-M9

 	Efficiency							Indoor unit				Outdoor unit					
	Cooling capacity	Heating capacity	Seasonal efficiency (according to EN14825)					Dimensions	Sound pressure level		Sound power level	Sound power level	Refrigerant				
			Cooling/Heating (Average climate)		Cooling	Heating (Average climate)	Cooling/Heating (Average climate)		Unit	Cooling			Heating	Cooling/ Heating (dBA)	Cooling/ Heating (dBA)	Type/GWP	Charge (kg/TCO2Eq)
Nom. (kW)	Nom. (kW)	Energy efficiency class	Pdesign (kW)	SEER	SCOP/A	Annual energy consumption (kWh)	Height x Width x Depth (mm)	Silent operation/ Low/High (dBA)	Silent operation/ Low/High (dBA)								
FVXM25FV1B / RXM25M3V1B9	2.50	3.40	A+++/A+	2.50/2.40	7.20	4.56	120/737	600x700x210	23/26/38	23/26/38	52/52	59/59	R-32/675.0	0.76/0.52			
FVXM35FV1B / RXM35M3V1B9	3.50	4.50		3.50/2.90	6.43	4.00	190/1,015		24/27/39	24/27/39		61/61					
FVXM50FV1B / RXM50M3V1B9	5.00	5.80		5.00/4.20	6.80		257/1,471		32/36/44	32/36/45	57/58	62/62	R-32/675	1.40/0.95			

Note: LOT 10 Efficiency labels go from A+++ to D

# Daikin Altherma hybrid heat pump + multi

The Hybrid Multi combines a multi system with a hybrid heat pump. Thanks to a dedicated port, hot water is produced, while simultaneously cooling your home. The Hybrid Multi is therefore an all-in-one system for cooling, heating and hot water purposes. Easily installed and with the possibility of controlling with an app on your smartphone or tablet, the Hybrid Multi is DAIKIN'S smart solution for your comfort all year long.

**Our Bluevolution multi outdoor units not only have the best efficiency but from now on can be used for hot water production as well!**

- › 3, 4 and 5 port multi outdoor units
- › Combinable with different split indoor units (Daikin Emura, Perfera, Comfora, FDXM)
- › One port to be used for hot water production
- › Control with an app thanks to Daikin's online controller



**The hybrid heat pump (gas and air) can produce hot water and provide heat for radiators and under floor heating**

- › Space heating with radiators and under floor heating: the most economical mode is selected based on energy prices, outdoor temperature and internal heat load
- › Domestic hot water: Gas condensing technology for production of hot water







**Daikin Europe N.V.** Naamloze Vennootschap Zandvoordestraat 300 · 8400 Oostende · Belgium · [www.daikin.eu](http://www.daikin.eu) · BE 0412 120 336 · RPR Oostende (Publisher)

FSC

ECPEN18-004A

06/18



Daikin Europe N.V. participates in the Eurovent Certified Performance programme for Liquid Chilling Packages and Hydronic Heat Pumps, Fan Coil Units and Variable Refrigerant Flow systems. Check ongoing validity of certificate: [www.eurovent-certification.com](http://www.eurovent-certification.com)



The present publication is drawn up by way of information only and does not constitute an offer binding upon Daikin Europe N.V. Daikin Europe N.V. has compiled the content of this publication to the best of its knowledge. No express or implied warranty is given for the completeness, accuracy, reliability or fitness for particular purpose of its content and the products and services presented therein. Specifications are subject to change without prior notice. Daikin Europe N.V. explicitly rejects any liability for any direct or indirect damage, in the broadest sense, arising from or related to the use and/or interpretation of this publication. All content is copyrighted by Daikin Europe N.V. Printed on non-chlorinated paper.